

em2

asbestos essentials

Non-licensed tasks

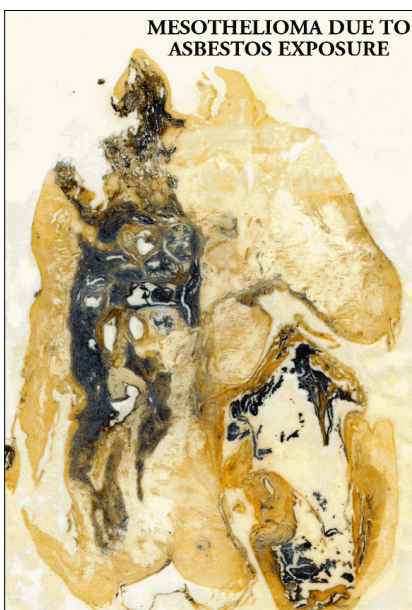
This information will help employers and the self-employed to comply with the Control of Asbestos Regulations 2006.

It is also useful for trade union and employee safety representatives.

Only carry out this work if you are properly trained and have the right equipment.

Remember:

- Asbestos fibres can cause lung cancer and lung diseases.
- Read the safety checklist on the task sheet.
- You must be trained to work safely with asbestos materials.
- Young workers are at special risk due to lack of experience.



*Asbestos sticks in your lungs.
The younger you are, the longer it
remains to cause damage.*

Training

Equipment and method sheet

What this sheet covers

People that carry out any work on asbestos materials must be trained and supervised properly.

You need training even if you worked with asbestos in the past.

Procedures

- Contact Infoline for information on training providers - see 'More help'.

Training, supervision and information

- Training must include detailed information on:
 - recognising asbestos;
 - how asbestos can affect your health;
 - the added dangers of smoking;
 - the uses and likely locations for asbestos in buildings;
 - what work you are allowed to do by law;
 - what the law requires you to do;
 - what methods to use;
 - what equipment you need to do the job properly;
 - how to choose, use and look after personal protective equipment;
 - recognising and dealing with other dangers, such as work at height;
 - decontamination of yourself and work areas;
 - emergency procedures; and
 - waste disposal.
- Refresher training is needed every year, or more often if:
 - work methods change;
 - the type of equipment used changes; or
 - the type of work changes a lot.
- Supervise the task - make sure workers follow the rules.

Information for others

- Tell all other workers that may be nearby what you are doing, where and why.
- Tell them about other risks from the work, eg changes in fire exits.

MORE HELP

- **Licensed asbestos contractors, and training providers** - HSE's Infoline
Tel: 0845 345 0055
Textphone: 0845 408 9577
e-mail: hse.infoline@natbrit.com
and at www.hse.gov.uk/asbestos/licensing/index.htm
- **HSE priced and free publications** -
HSE Books Tel: 01787 881165
and at www.hsebooks.co.uk
- **More asbestos pictures** -
www.hse.gov.uk/asbestos/gallery.htm
- **Trade associations** - the Asbestos
Removal Contractors Association
(ARCA) Tel: 01283 531126
Website: www.arcaweb.org.uk, or the
Asbestos Control and Abatement
Division (ACAD) Tel: 01325 466704
- These equipment and method
sheets and task (a) sheets can be
downloaded free from [www.hse.gov.uk
/asbestos/essentials/index.htm](http://www.hse.gov.uk/asbestos/essentials/index.htm)
- See sheet a0 for details of more
guidance

This document is available at www.hse.gov.uk/asbestos/essentials/index.htm

© *Crown copyright* This publication may be freely reproduced, except for advertising, endorsement or commercial purposes. First published 09/06. Please acknowledge the source as HSE.

Published by the Health and Safety Executive 12/07

This guidance is issued by the Health and Safety Executive. Following the guidance is not compulsory and you are free to take other action. But if you do follow the guidance you will normally be doing enough to comply with the law. Health and safety inspectors seek to secure compliance with the law and may refer to this guidance as illustrating good practice.